

**ADVANCED | COMPLETE**

## UNIVERGE BLUE ENGAGE ADVANCED

Upgrade your customer experience with enhanced interactions, deeper insights, and more efficient resolutions.

Enhance your interactions, insights, and customer engagement. UNIVERGE BLUE ENGAGE ADVANCED package offers self-service capabilities, skills-based call routing, and historical reporting. You also get the option to add full multi-channel capabilities (SMS, Chat, Email) to take the conversation well beyond just voice.

### FEATURE HIGHLIGHTS INCLUDE:

- Skills- and rules-based routing
- Scheduled & custom reports
- Queued callbacks & voicemails
- Interaction analytics

## DELIVER SUPERIOR OUTCOMES

### Faster Customer Connections

Features like skills-based and rules-based routing help customers quickly get the right answer, from the right person, at the right time. Your customers – and your KPIs – will thank you.

### More Insights for Better Service Quality

Real-time reports are terrific for managing in the moment. Sometimes, though, you need to see trends and patterns over time. ENGAGE ADVANCED helps you get there, with more reporting tools, report scheduling, historical reporting, and interaction analytics.

### Intelligently Direct Inquiries

With the ENGAGE ADVANCED package, you can customize call flows using the Interactive Voice Response (IVR) system to streamline the flow of inquiries and deliver faster service.

### Greater Communication Convenience (Add-On)

Not all customers pick up the phone. Our email, chat, and SMS channel add-ons let you take the conversation further. Add only the channels you need now and add more later.

# UNIVERGE BLUE ENGAGE ADVANCED CONTACT CENTER INCLUDES



## FOR CUSTOMERS

- Smart Greetings (announces # of callers in queue, estimated waiting time)
- Automatically connects callers to the next available agent. Places the caller on hold when all agents are busy with calls
- Routes calls to i) Organized departments such as sales, customer service, or technical support, or ii) Agent based on specific skillset or geography
- Customizable IVRs let you map out call flow to deliver efficient routing and resolutions

## FOR FRONTLINE USERS

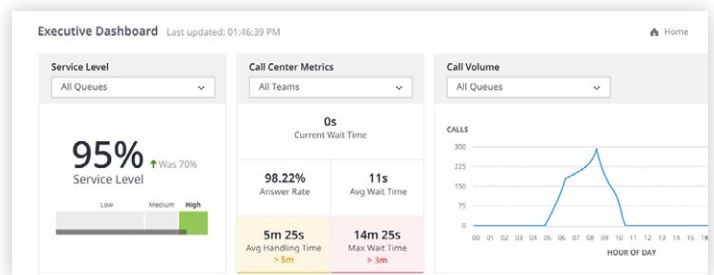
- Access to integrated employee collaboration and advanced call handling within UNIVERGE BLUE CONNECT
- Desktop & Web Application – single pane of glass for all communications
- Outbound power dialing feature drives proactive outreach
- Queued Callbacks and Voicemails make for structured, efficient follow-ups
- Custom Agent Status

## FOR SUPERVISORS

- Desktop & Web Application
- Enhanced supervisor management abilities: monitor, whisper, and barge
- Supervisor Reporting:
  - Agent/Group Activity Reporting
  - Historical Reporting
  - Call queue and active call reports
  - Report Scheduling
  - AI-powered interaction analysis with sentiment tagging<sup>1</sup>

## FOR ADMINISTRATORS

- Real-time calling statistics dashboard for desktop or wallboard display
- Integrations with CRMs
- Intelligent call routing using Interactive voice Response (IVR) gets customers to the right agent or information using their voice
- Routes calls according to Administrator specifications: Last Agent, Preferred Agent, etc.
- Outbound Dialer with voice & blended channel queues (add-on)
- Real-Time Customizable Threshold Alerts
- Emergency Queue Bulletins
- Post-Call Surveys
- Text-To-Speech
- Call Scripting
- Elastic Demand Support<sup>2</sup>



1. ADVANCED subscribers can purchase transcription time for interaction analytics in 5-hour increments. 2. Conditions apply; ask for details.

NEC and the NEC logo are trademarks or registered trademarks of NEC Corporation that may be registered in Japan and other jurisdictions. All trademarks identified with © or TM are registered trademarks or trademarks of their respective owners. Models may vary for each country, and due to continuous improvements this specification is subject to change without notice. Please refer to your local NEC representative(s) for further details.

**Americas (U.S., Canada, Latin America)**  
NEC Corporation of America  
[www.necam.com](http://www.necam.com)

For further information please contact NEC Corporation of America or: